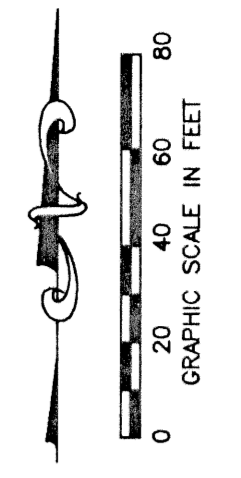


WINSTON TRAILS PARCEL SIXTEEN

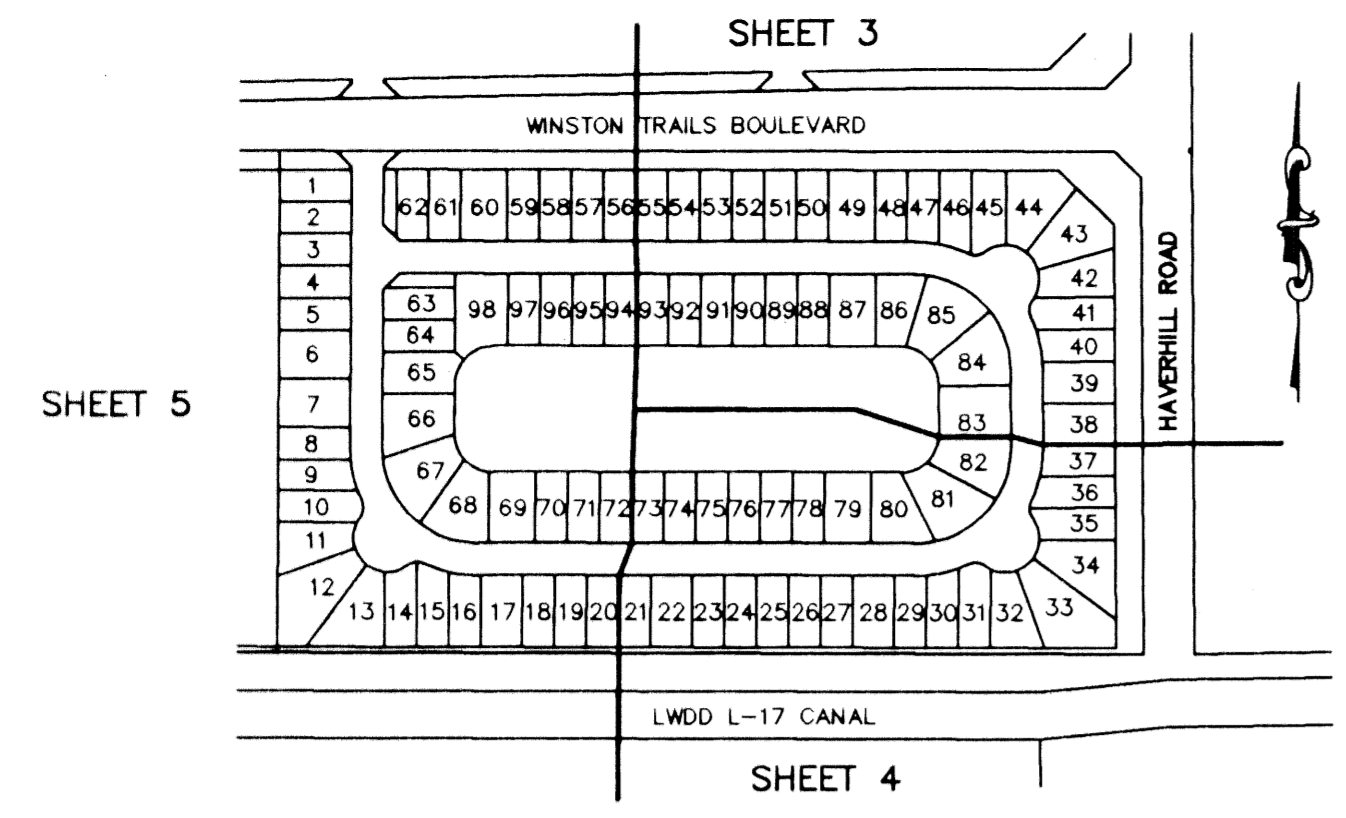
PART OF WINSTON TRAILS P.U.D.
BEING A REPLAT OF TRACT D,
"WINSTON TRAILS EAST"
(PB 85, PGS 74-78)

SITUATE IN SECTION 2, TOWNSHIP 45 SOUTH, RANGE 42 EAST
PALM BEACH COUNTY, FLORIDA
OCTOBER, 1998 SHEET 4 OF 5

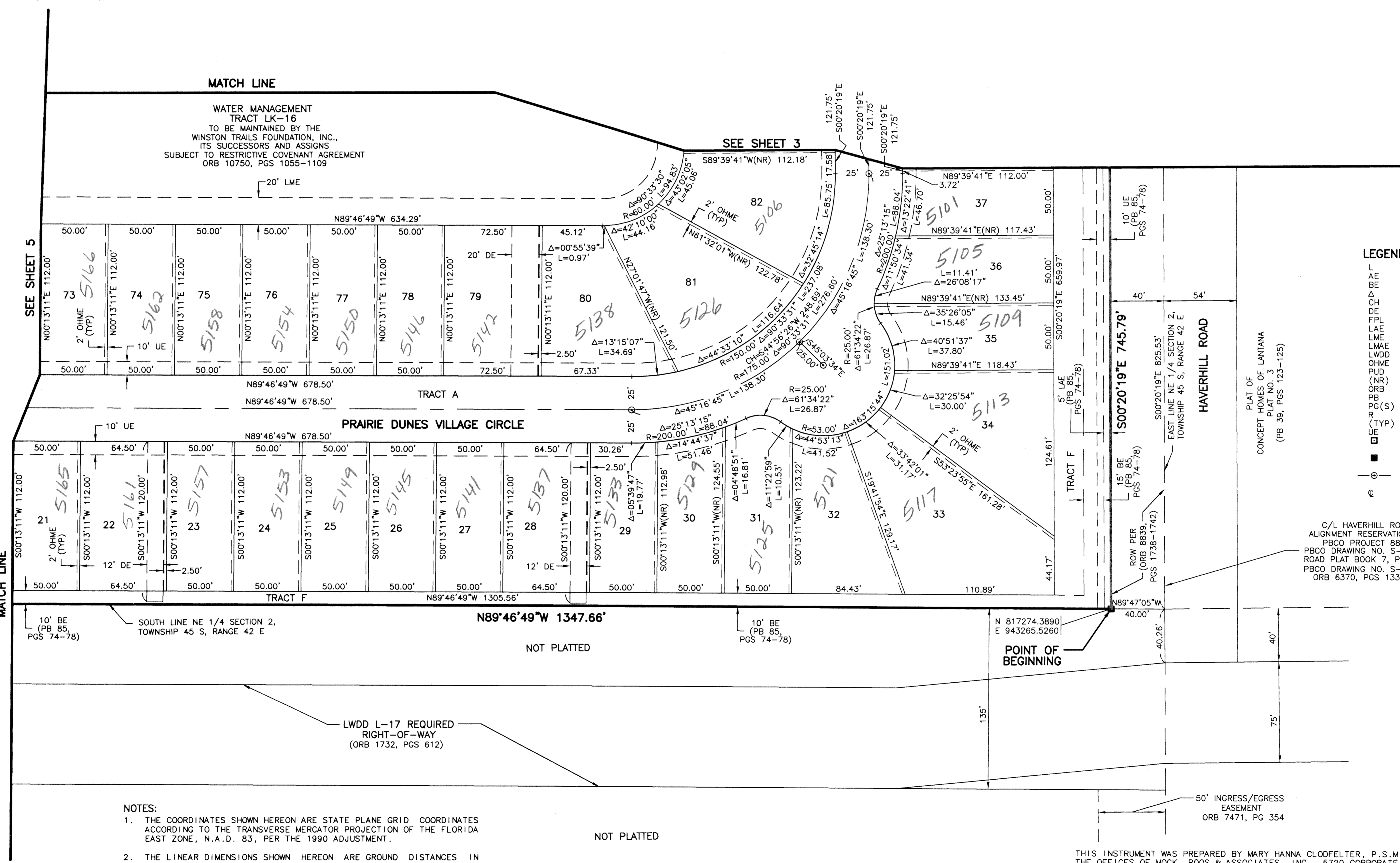
STATE OF FLORIDA
COUNTY OF PALM BEACH
THIS PLAT WAS FILED FOR
RECORD _____ DAY OF _____
AD, 1999 AND DULY RECORDED
IN PLAT BOOK _____ ON PAGES
_____ AND _____
DOROTHY H. WILKEN, CLERK
BY: _____, D.C.



CIRCUIT COURT SEAL



SHEET LOCATION MAP
(NOT TO SCALE)



- LEGEND**
- L ARC LENGTH
 - AE ACCESS EASEMENT
 - BE BUFFER EASEMENT
 - CE CENTRAL (DELTA) ANGLE
 - CH CHORD
 - DE DRAINAGE EASEMENT
 - FPL FLORIDA POWER & LIGHT
 - LAE LIMITED ACCESS EASEMENT
 - LME LAKE MAINTENANCE EASEMENT
 - LMAE LAKE MAINTENANCE ACCESS EASEMENT
 - LWDD LAKE WORTH DRAINAGE DISTRICT
 - OHME OVERHANG MAINTENANCE EASEMENT
 - PUD PLANNED UNIT OF DEVELOPMENT
 - (NR) NON-RADIAL
 - OR(B) OFFICIAL RECORD BOOK
 - PB PLAT BOOK
 - PG(S) PAGE(S)
 - R RADIUS
 - (TYP) TYPICAL
 - UE UTILITY EASEMENT
 - PERM PERMANENT REFERENCE MONUMENT
 - FOUND LB-048 PERMANENT REFERENCE MONUMENT
 - SET LB-048 PERMANENT REFERENCE MONUMENT
 - PERM CONTROL POINT
 - SET LB-048 PERMANENT REFERENCE MONUMENT
 - CL CENTERLINE

C/L HAVERHILL ROAD
ALIGNMENT RESERVATION MAP
PBCO PROJECT 88506
PBCO DRAWING NO. S-3-89-052
ROAD PLAT BOOK 7, PGS 39-47
PBCO DRAWING NO. S-1-90-100
ORB 6370, PGS 1333-1350

- NOTES:**
- THE COORDINATES SHOWN HEREON ARE STATE PLANE GRID COORDINATES ACCORDING TO THE TRANSVERSE MERCATOR PROJECTION OF THE FLORIDA EAST ZONE, N.A.D. 83, PER THE 1990 ADJUSTMENT.
 - THE LINEAR DIMENSIONS SHOWN HEREON ARE GROUND DISTANCES IN U.S. FEET AND DECIMAL PARTS THEREOF.
 - THE GROUND DISTANCE TO GRID DISTANCE SCALE FACTOR IS 1.0000337 (GROUND DISTANCE X SCALE FACTOR = GRID DISTANCE).
 - THE FILING OF THIS PLAT EXTINGUISHES THAT PORTION OF THE EASEMENT RECORDED IN OFFICIAL RECORD BOOK 10627, PAGE 700 THROUGH 713, OF THE PUBLIC RECORDS OF PALM BEACH COUNTY, FLORIDA, WHICH IS LOCATED ON THE PROPERTY SUBJECT TO THIS PLAT.

THIS INSTRUMENT WAS PREPARED BY MARY HANNA CLODFELTER, P.S.M. IN THE OFFICES OF MOCK, ROOS & ASSOCIATES, INC., 5720 CORPORATE WAY, WEST PALM BEACH, FLORIDA 33407.

SCALE:	1" = 40'
P.A. NO.:	98008.60
DATE:	OCTOBER 1998
DRAWING NO.:	45-42-02-124

MOCK • ROOS
ENGINEERS • SURVEYORS • PLANNERS

5720 Corporate Way, West Palm Beach, Florida 33407
(561) 683-3113, fax 478-7248

**WINSTON TRAILS
PARCEL SIXTEEN**
PART OF WINSTON TRAILS P.U.D.
BEING A REPLAT OF TRACT D,
"WINSTON TRAILS EAST"
(PB 85, PGS 74-78)
SECTION 2, TOWNSHIP 45 SOUTH, RANGE 42 E
PALM BEACH COUNTY, FLORIDA

Subdivision Winston Trails
Book 87
Flood Zone B
Zoning PUD
ZIN CODE 33443
S.E. 87-112
TAZ 436
PUD NAME Winston Trails

K:\musa\MUSSWTEP\dwg\WTEPR16.dwg 09/08/98 02:10:02 PM EDT

REV.: 08-25-99
CAD FILE:
MUSSWTEP/WTEPR16